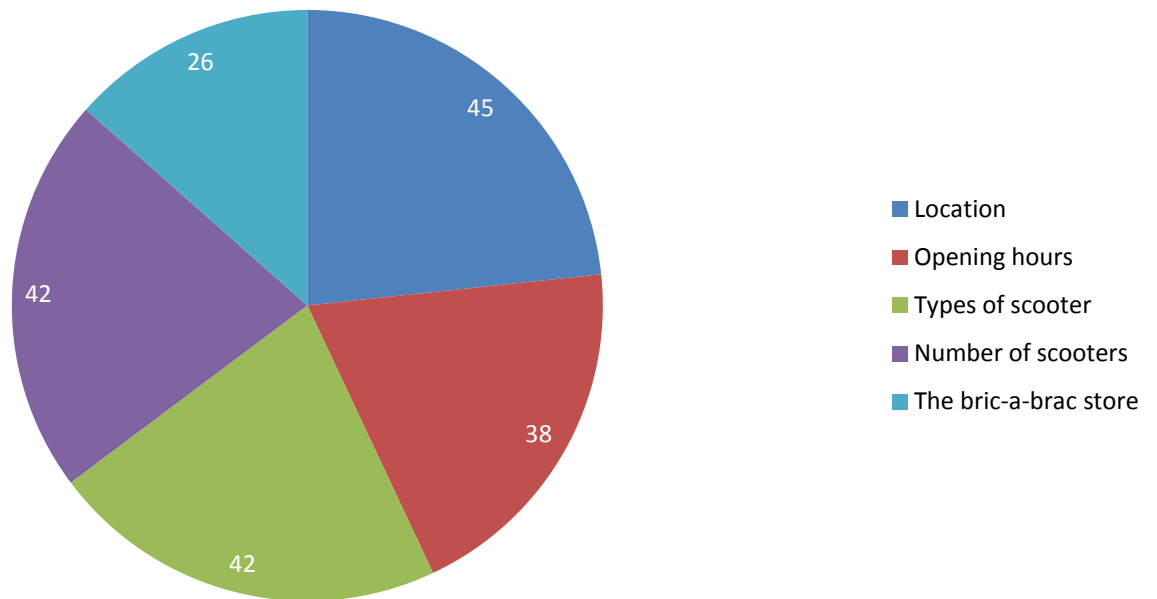
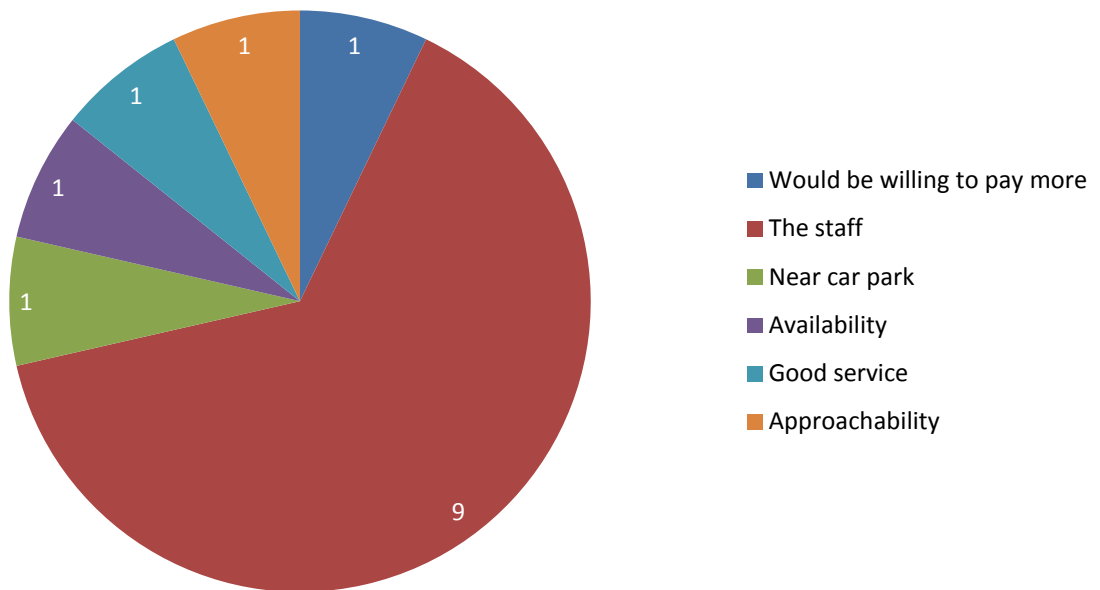


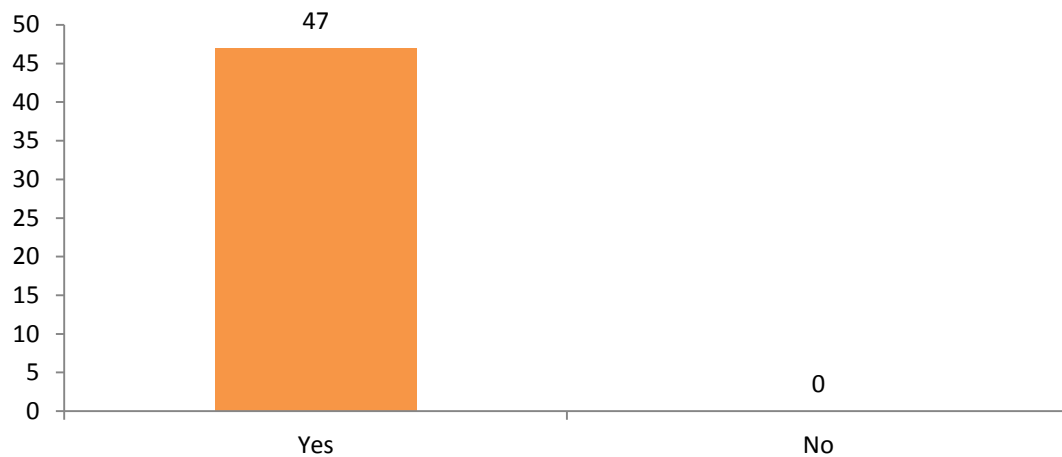
## What do you like about the current Shopmobility Service?



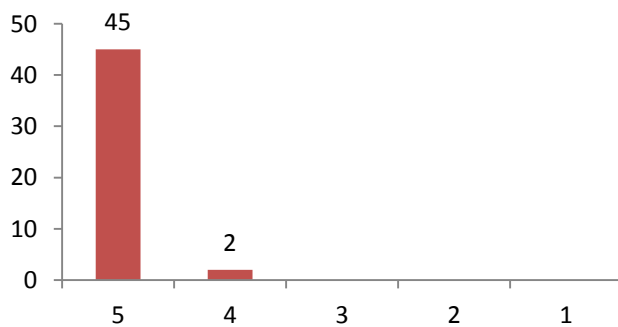
## What do you like about the Service...Other



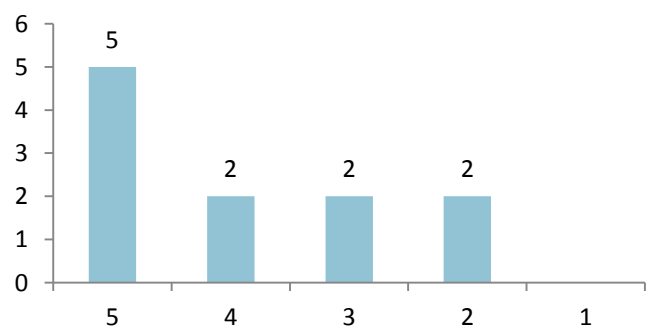
## Would you recommend the service to others?



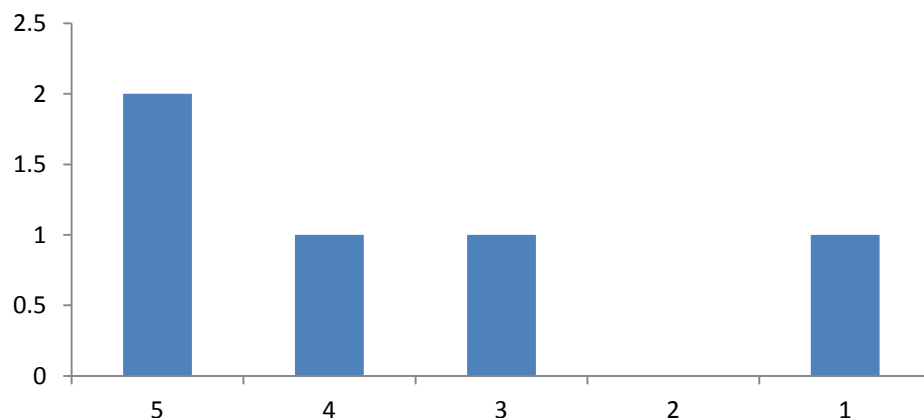
## How would you rate the Gloucester service? 5 = Excellent, 1= Poor



## How would you rate the Cheltenham Service? 5 = Excellent, 1 = Poor



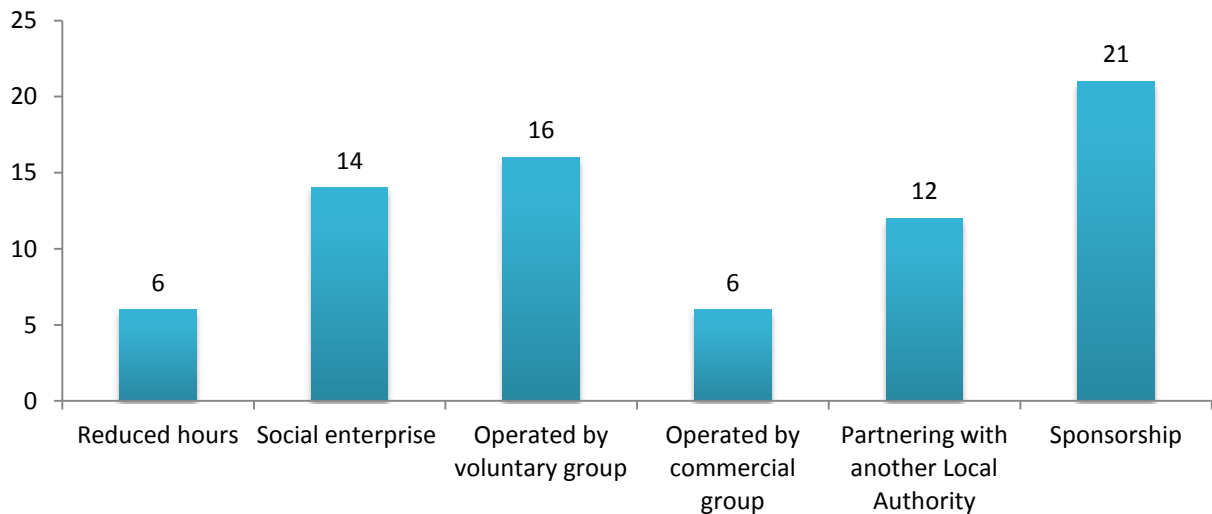
## How would you rate the Weston Super Mare Service? 5 = Excellent, 1 = Poor



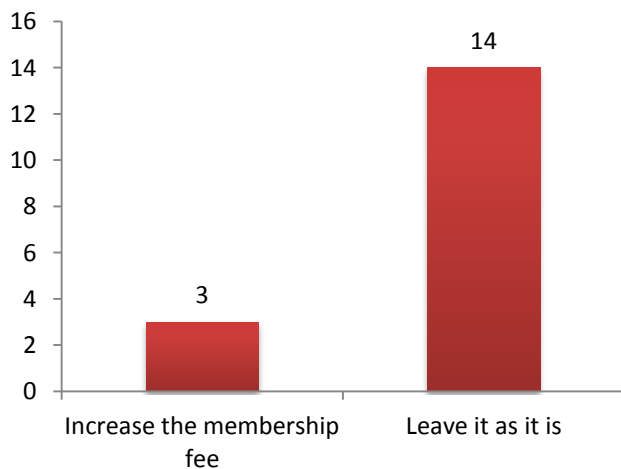
## What is the most important thing to you about the Shopmobility Service?



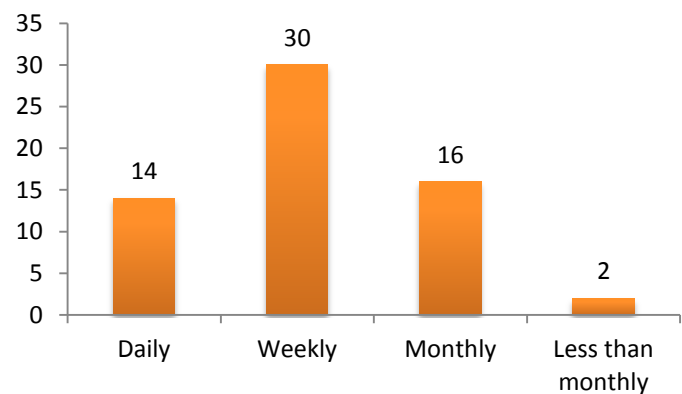
## The Council needs to save £50,000. Which is the most acceptable way of doing so?



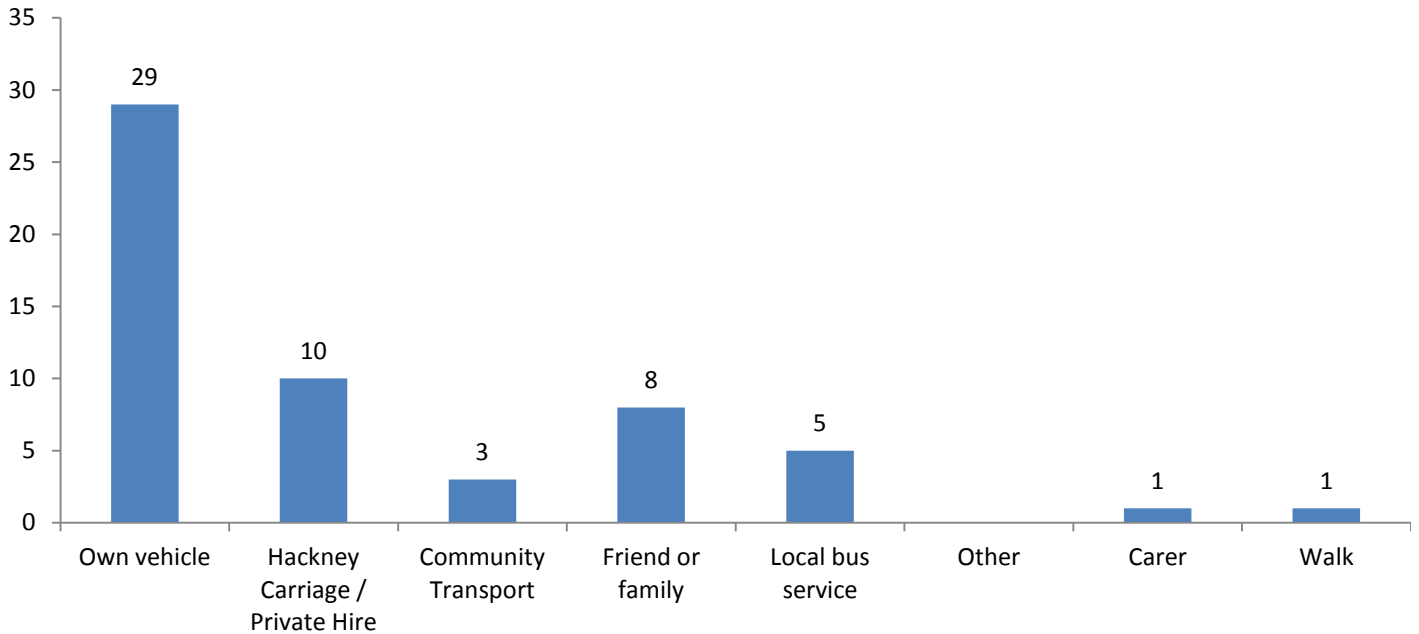
## Other suggestions for saving £50,000



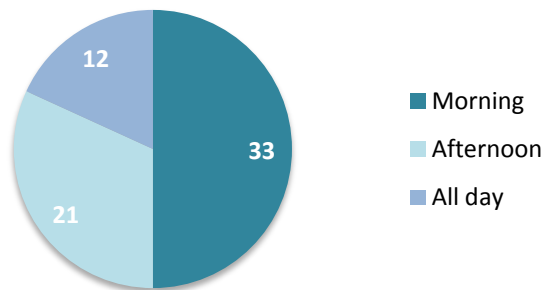
## How often do you use the service?



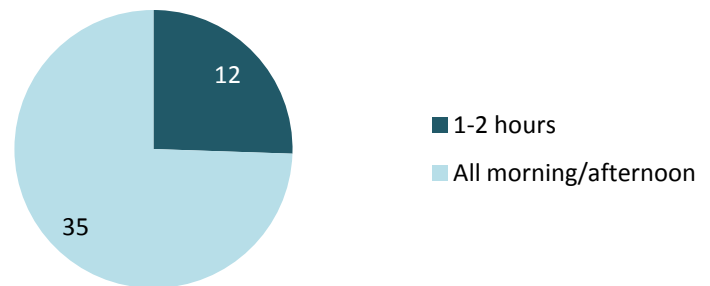
## How do you access the service?



## At what time of day do you use the service?



## How long, on average, do you use the service for?



## What do you use the scooter for?

